

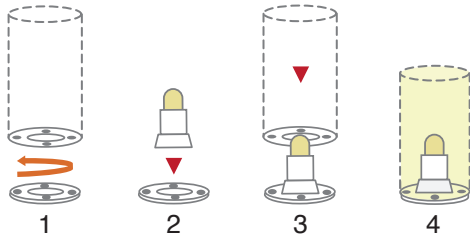
ALLWAYS LAMP & RECHARGEABLE SUPER BRIGHT LED CANDLE USER GUIDE

QUICK START

CHARGE

The Super Bright LED candles are partially charged for immediate use. To fully charge LED candles, see Charging Instructions section.

INSTALL



1. To install a Super Bright LED Candle in an ALLWAYS lamp, simply twist open the lamp's Magnetic Auto-Attach Base*. *Registered design
2. Place the base on a flat surface and position the LED candle in the base's recessed center.
3. Hold the ALLWAYS lamp body and position over the base.
4. The Magnetic Auto-Attach Base will automatically attach to the lamp body at about 5cm distance.

OPERATE

To switch off and on, press the round button on the bottom of the LED candle. Once the LED candle is on, ON/OFF function can also be operated via remote control. For other Remote Control functions, see REMOTE CONTROL section.

USE AS WALL OR CEILING LAMPS*

ALLWAYS lamps are equipped with magnetic bases. Lamps with maximum height of 15cm can be attached vertically or sideways to metal surfaces with strong iron element. Check carefully if the magnetic attraction is strong enough for secure attachment before attempting to use as ceilings or wall lamps.

*Cautions:

- Lamps over 15cm will be too heavy for use as ceiling or wall lamps.
- Not all metal surfaces contain iron element. Test before attempting to attach lamps to wall or ceiling.
- Do not use lamps as ceiling or wall lamps in areas with heavy traffic, strong winds, or accessible to pets or children.

CHARGING INSTRUCTIONS

1. To fully charge LED candles, connect charging tray to power source (via supplied USB cable or AC charger). When connected, a green light on the tray will light up, indicating the tray is ready for charging*.
2. Place LED candles in tray and charge. A small light on the side of each candle will light up to indicate the charging status when placed in the tray. RED means it is charging. GREEN means it is fully charged. A full charge takes about 4-5 hours.
3. After LED candles being fully charged, disconnect the charging tray from power source for safety precaution. See Safety Notes.
4. A fully charged Super Bright LED Candle will provide about 14 hours of continuous lighting, depending on the battery's condition.

*Cautions:

- If the tray's green light does not light up, check power connection.
- In rare cases, if the tray's green light turns to red during charging, the tray maybe over-heating. Disconnect the tray from power source.

For more information, please visit www.home-ambience.com or email to sales@lumea.com.hk.

REMOTE CONTROL



WARM WHITE /
CANDLELIGHT



CHANGEABLE
MULTI-COLOURS

SINGLE COLOUR (WARM WHITE / CANDLELIGHT)

ON / OFF - To switch on and off.

TIMER - 4-hour or 8-hour timer.

CANDLE / LIGHT MODE - "Candle" for candlelight flickering effect (default) or "Light" for non-flickering stationary lighting.

DIMMER - Dimmer or brighter (default). About 20% brightness difference.

CHANGEABLE MULTI-COLOURS

ON / OFF - To switch on and off.

TIMER - 4-hour timer.

COLOUR CHANGING MODE - "Smooth" for subtle automatic colour changing (default) or "Flash" for quick colour changing.

CANDLE / LIGHT MODE - "Candle" for candlelight flickering effect or "Light" (default) for non-flickering stationary lighting.

DIMMER - Dimmer or brighter (default). About 20% brightness difference.

INDIVIDUAL COLOURS - Pick from 12 colour tones.

SAFETY NOTES

In general, the low voltage LED candles are very safe for home and everyday use if safety measures are followed carefully.

- Do not leave the LED candles charging continuously. Once the LED candles are fully charged, disconnect the charging tray from power source. This will prevent potential overheating and may prevent the built-in rechargeable battery from over-charging which may shorten its usable life span.
- If the tray is over-heating (possibly due to over-charging), the tray's green light may turn to red. Disconnect the tray from power supply for cooling. When the tray is cool, reconnect to check tray's status. If red light continues, stop using the tray.
- Do not use other charging accessories to charge our LED candles. Third party charging accessories may not be compatible and may damage the LED candles, or cause fire hazards.
- Do not take apart either the LED candles or charging accessories. Doing so may damage the waterproof function and may cause electronic failure.
- Do not expose the LED candles or charging accessories to extreme temperatures. Doing so may damage the electronic parts and may cause malfunctions.
- Do not place LED candles or charging accessories near fire. Explosion may occur.
- Dispose the LED candles and charging accessories properly when they are no longer usable.